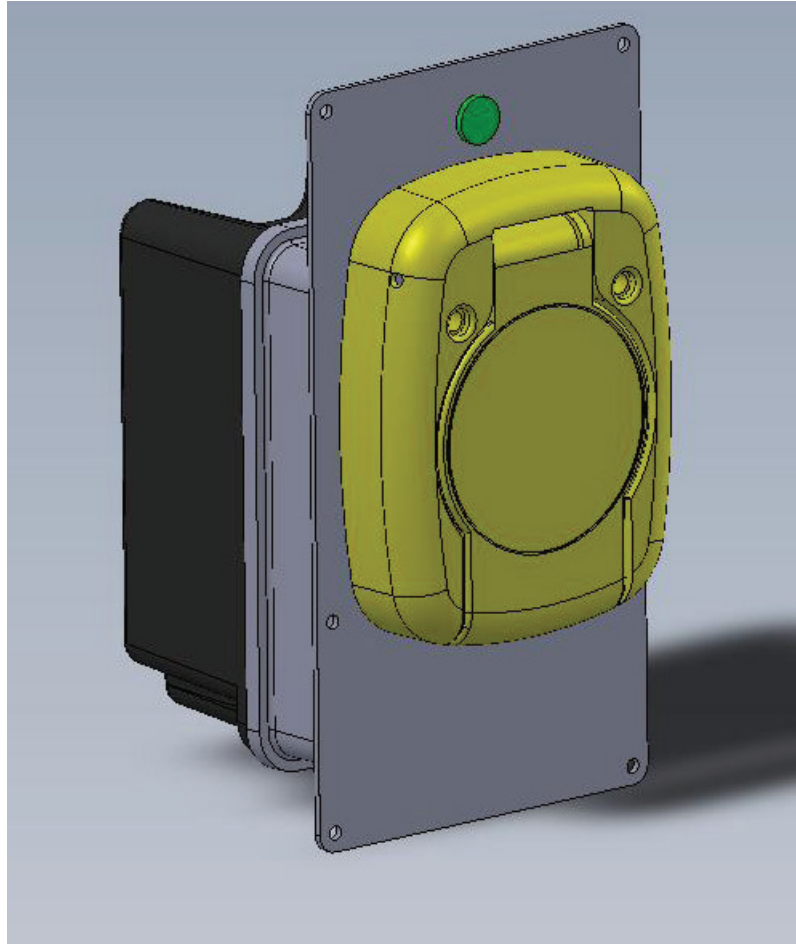


## INSTRUCTION MANUAL

---

# SUPER 30 PLATE 240V INDICATOR



**MODEL: 091-159-081-240**

# INTRODUCTION

---

The Super 30 mounting plate with AC indicator is an optional mounting plate that can be used in place of the standard mounting plate. The AC indicator illuminates to indicate that AC power is present. The indicator can be wired directly to the Auto Eject by removing the rear plastic cover or to an AC distribution panel.

## INSTALLATION INSTRUCTIONS

---

### Step #1 Wiring Unit

1. Prepare and install wiring for AC indicator light.

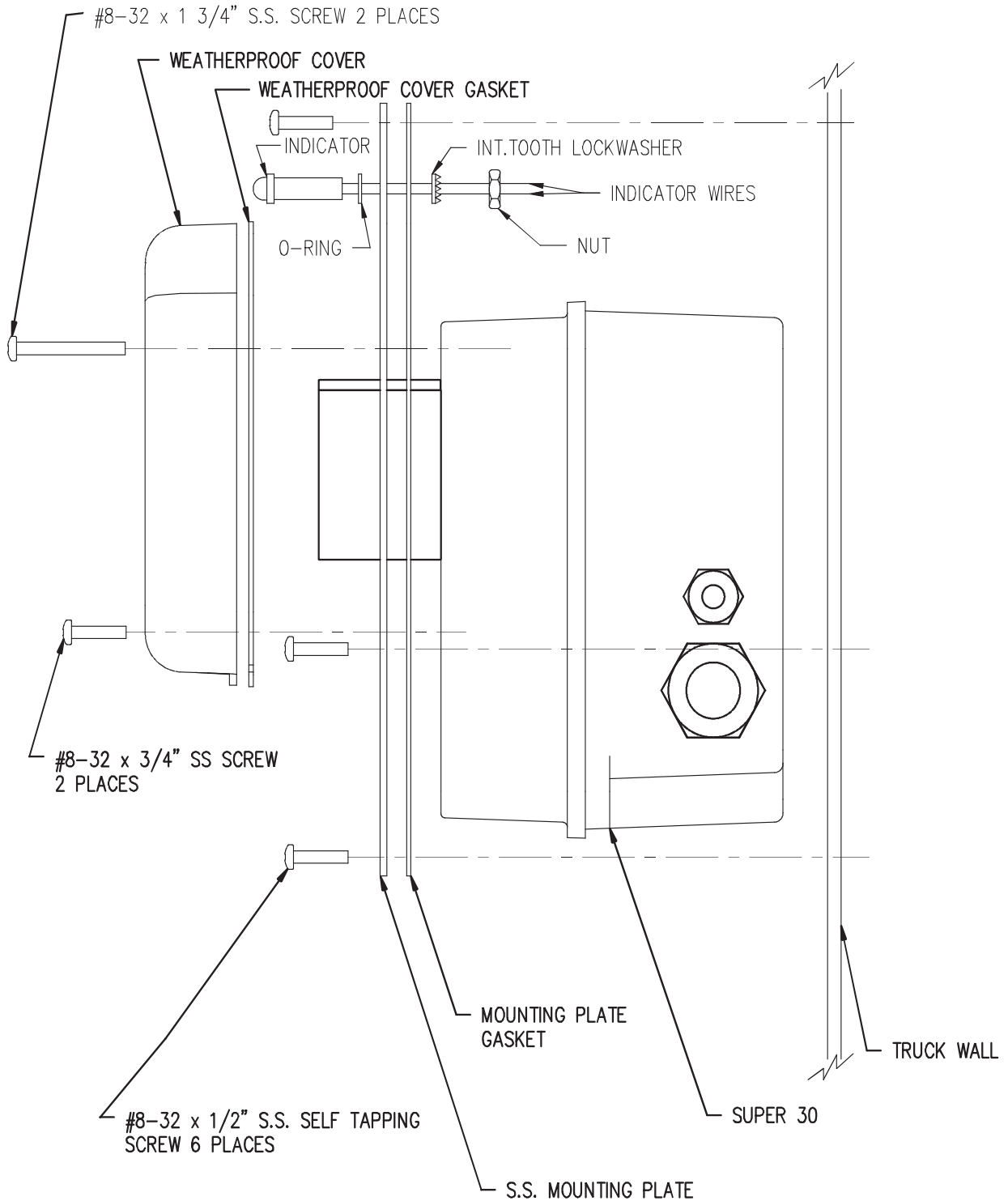
Option A: Wire indicator across LINE & NEUTRAL by removing rear plastic cover. See Figure 2, AC wiring.

Option B: Wire indicator to an AC distribution panel.

2. Test the unit to see if it is operational before mounting.

### Step #2 Mounting of Unit

1. Locate a convenient place on the vehicle to mount the AUTO EJECT. A minimum clearance of 5 inches behind the mounting panel is required.
2. Place the hole template in position and center punch in 6 places. See Figure 4, Hole Template with Indicator.
3. Drill 6 mounting holes, #29 drill (0.136" diameter). Be certain that all the holes are precisely located.
4. Cut-out rectangular hole. Make sure to use the template with indicator.
5. Install Weatherproof Cover, Weatherproof Cover Gasket, Mounting Plate, and Mounting Plate Gasket to Super 30 using screws provided. See Figure 1, Mounting with Indicator.
6. Install assembly into cut-out in truck wall using self tapping screws provided.



UNLESS OTHERWISE SPECIFIED:  
 DIMENSIONS ARE IN INCHES  
 TOLERANCES  
 DECIMALS ANGULAR  
 .XX ± .005  
 .XXX ± .001  
 DO NOT SCALE DRAWING

DRAWN T. Nugent

FINISH

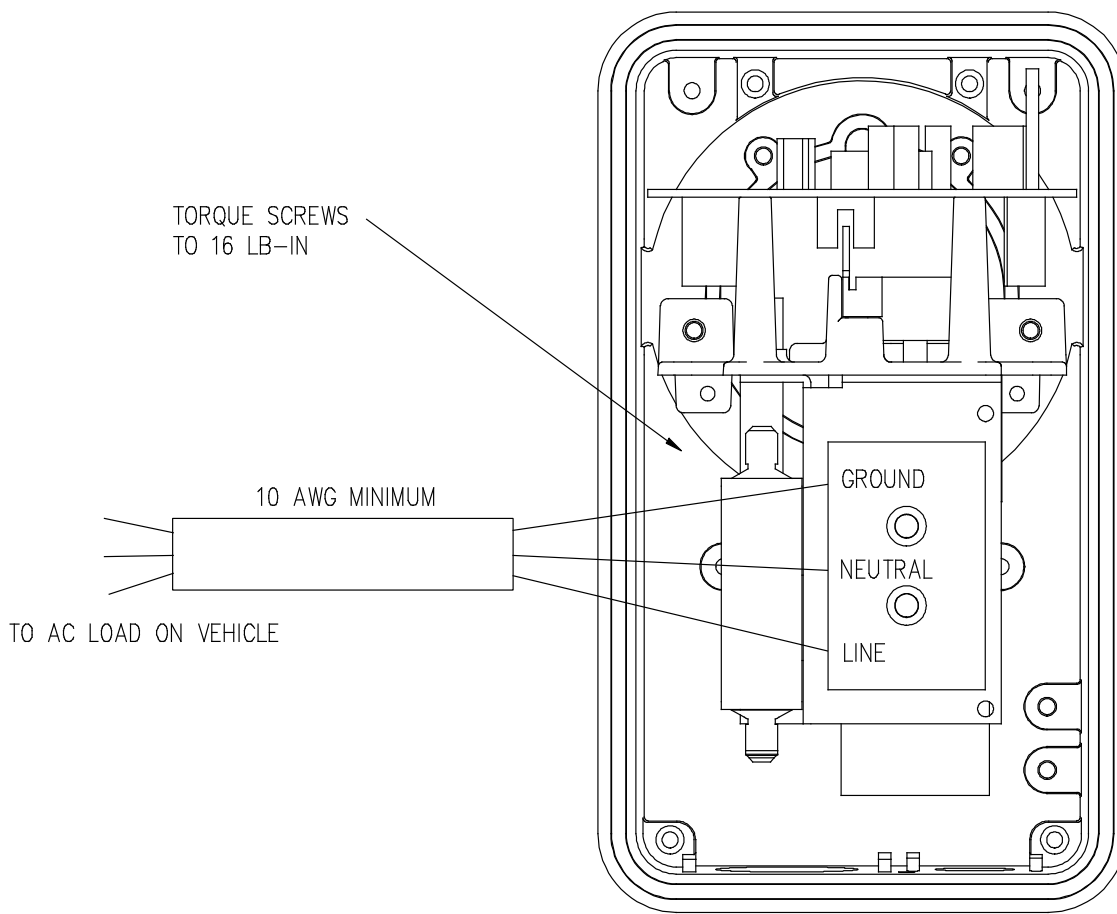
MAT



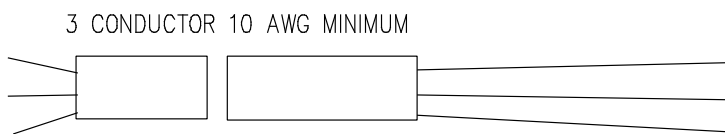
KUSSMAUL ELECTRONICS CO., INC.  
 WEST SAYVILLE, NY

FIGURE 1 MOUNTING W/INDICATOR, INSTRUCTIONS

SIZE	DWG NO.	REV
	091-159	A
SCALE	DATE	SHEET OF




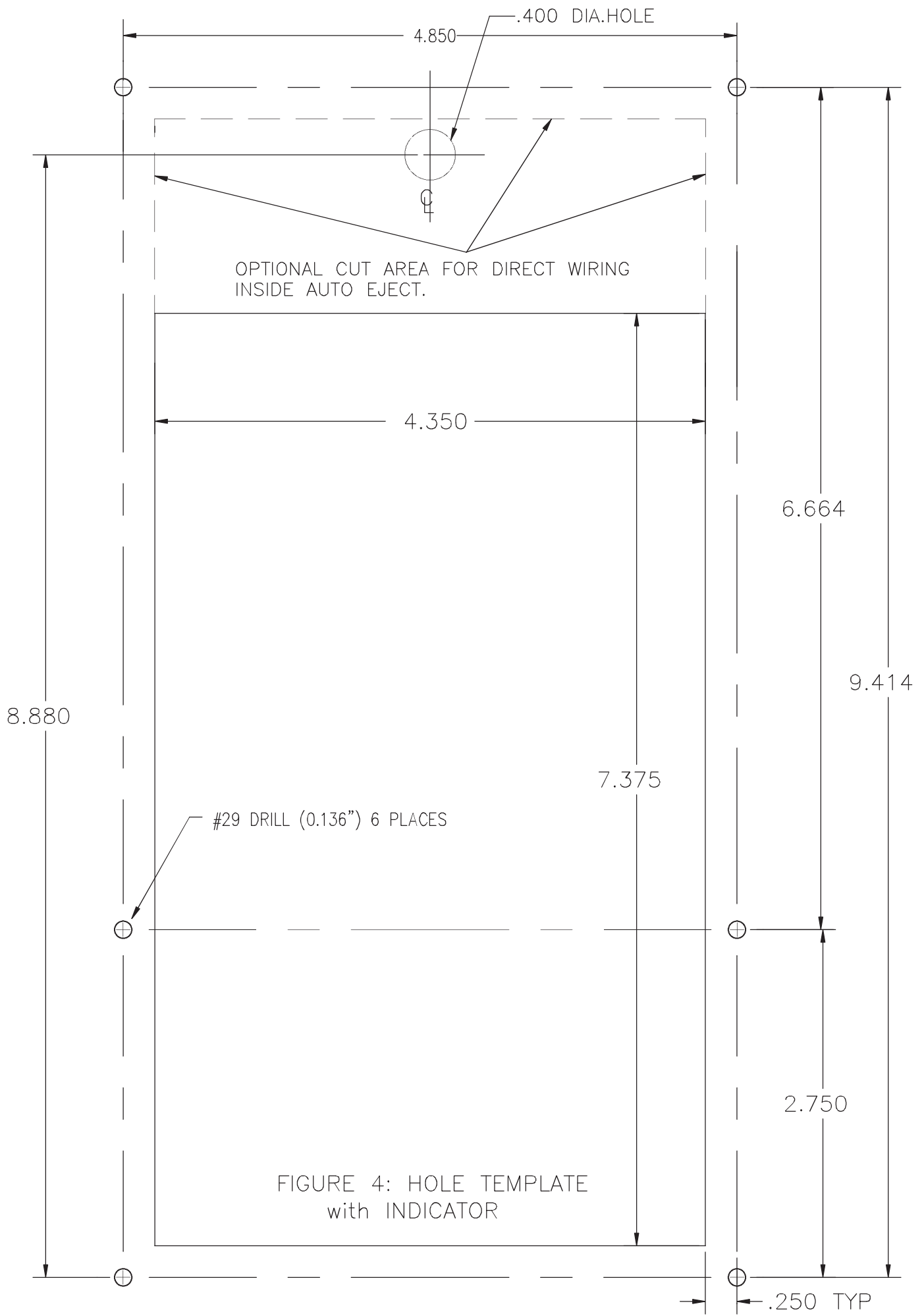
BACK OF SUPER 30 AUTO EJECT  
WITH REAR PLASTIC COVER REMOVED

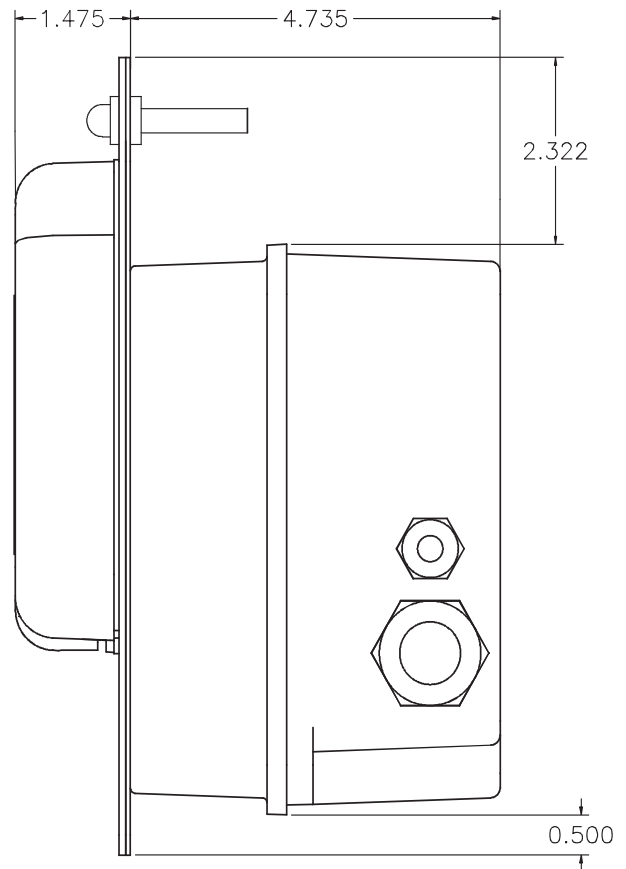
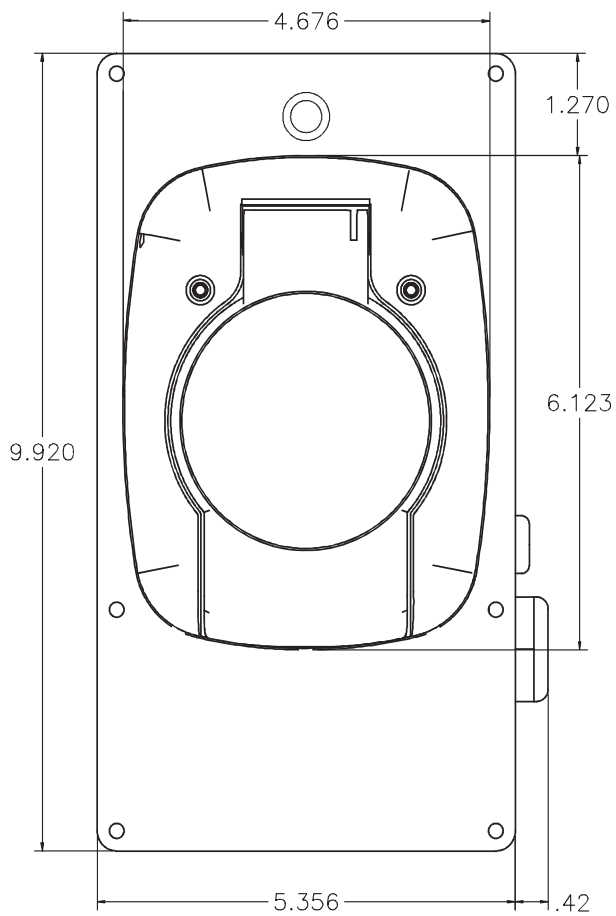
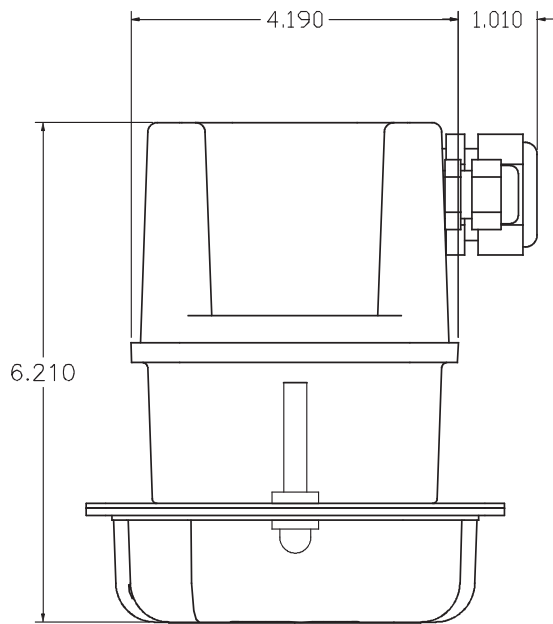


STRIP WIRES 5" FROM OUTER JACKET

UNLESS OTHERWISE SPECIFIED: DIMENSIONS ARE IN INCHES TOLERANCES DECIMALS ANGULAR .XX ± .005 .XXX ± .001 DO NOT SCALE DRAWING	
DRAWN	T. Nugent
FINISH	
MAT	

				<b>KUSSMAUL ELECTRONICS CO., INC.</b>			
				WEST SAYVILLE, NY			
FIGURE 2 AC WIRING							
SIZE		DWG NO.				REV	
		091-159					
SCALE		DATE		SHEET		OF	





UNLESS OTHERWISE SPECIFIED:  
DIMENSIONS ARE IN INCHES  
TOLERANCES  
DECIMALS ANGULAR  
XX ± .005  
.XXX ± .001  
DO NOT SCALE DRAWING

DRAWN  
T. Nugent

FINISH

MATERIAL



**KUSSMAUL ELECTRONICS CO., INC.**  
WEST SAYVILLE, NY

OUTLINE DRAWING (WITH INDICATOR)

SIZE

DWG NO.

091-159

REV

A

SCALE

DATE

SHEET

OF

## SPECIFICATIONS

---

<b>Hardware Pack:</b>	(1) 091-159-081: Mounting plate
	(1) 091-159-082: Plate Gasket
	(1) 091-IND6013M5: Green indicator, 240VAC
	(6) 091-SCR832SS0500PPT23: 8-32X1/2, SCREW
<b>Weight:</b>	1 pound

# **INSTALLATION RECORD & WARRANTY**

---

**Date Installed** \_\_\_\_\_

**Installed By** \_\_\_\_\_

**Vehicle Identification** \_\_\_\_\_

**Vehicle Owner** \_\_\_\_\_

## **2 YEAR WARRANTY**

All Super 30 Auto Ejects manufactured by Kusssmaul Electronics Company Inc. are warranted to be free of defects of material or workmanship. Liability is limited to repairing or replacing at our factory, without charge, any material or defects which become apparent in normal use within 2 years from the date the equipment was shipped. Equipment is to be returned, shipping charges prepaid and will be returned, after repair, shipping charges paid.

This warranty does not include normal wear and tear, pitting of the electrical contacts, malfunction due to contamination of the mechanism, or any cracking, breakage or damage to the connector.

Kusssmaul Electronics Company, Inc. shall have no liability for damages of any kind to associated equipment arising from the installation and /or use of the Kusssmaul Electronics Company, Inc. products. The purchaser, by the acceptance of the equipment, assumes all liability for any damages which may result from its installation, use or misuse, by the purchaser, his or its employees or others.